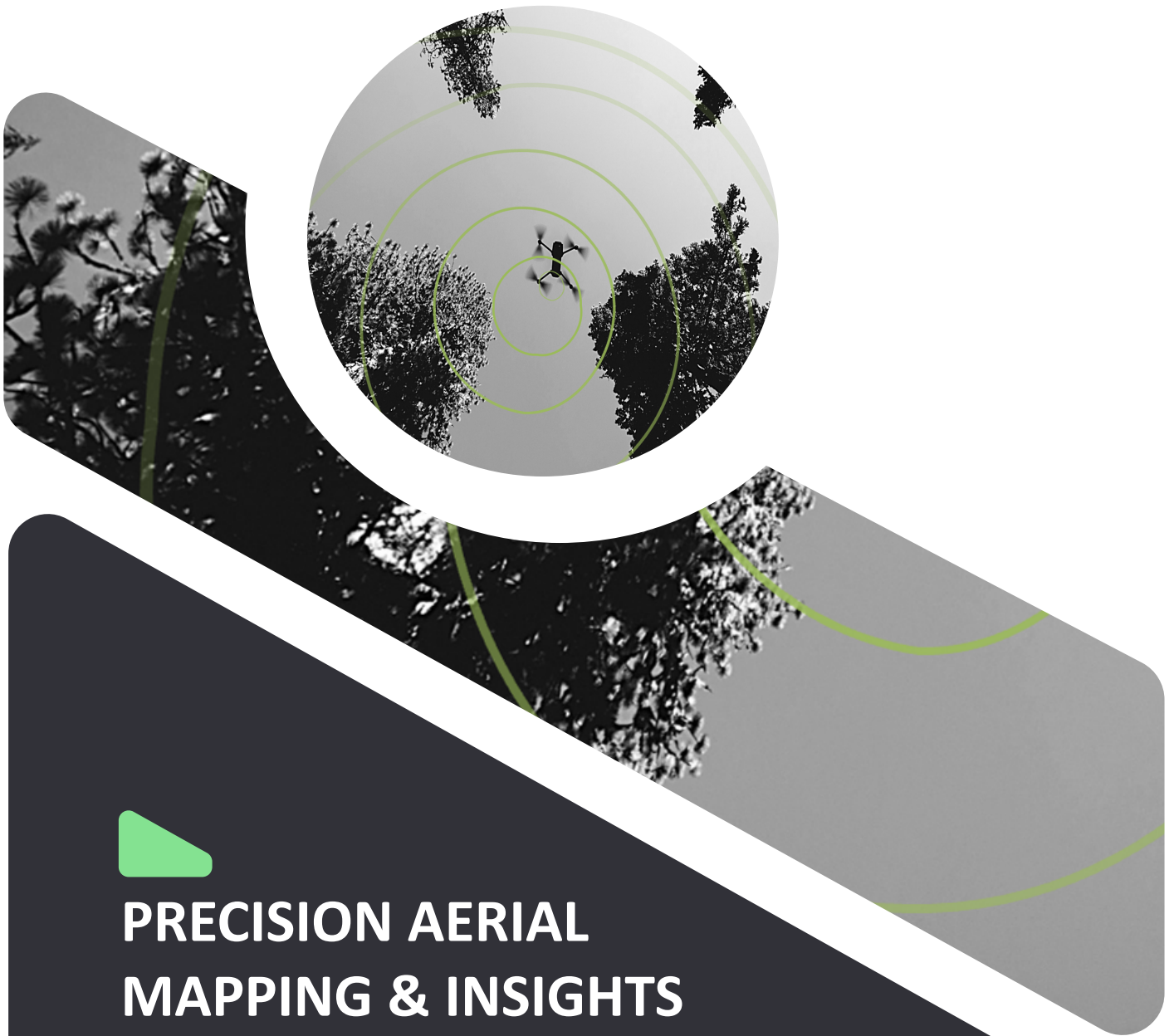


MÒR
M a p p i n g



PRECISION AERIAL MAPPING & INSIGHTS

For land, infrastructure, and industrial environments

Welcome To **OUR COMPANY**

At **MÒR MAPPING**, we exist to remove uncertainty from spatial decision-making through reliable, high-accuracy aerial mapping. Our work is focused on delivering accurate, reliable spatial data for projects where quality, consistency, and clarity matter. We understand that mapping is not just about visuals — it is about outcomes. Engineering, construction, and planning teams rely on our data to design, measure, verify, and move forward with confidence. That's why every project we undertake is approached with a rigorous, accuracy-first mindset and a clear understanding of how the data will be used.

Our services are built around disciplined workflows, validated data, and clear communication from project scoping through to final delivery. We do not cut corners, and we do not treat precision as optional. Every dataset is produced to support real decisions, not assumptions. Based in Queensland and working across a range of industries, we partner with professionals who value reliability and accountability. When accuracy matters, our role is simple: to provide data you can trust.



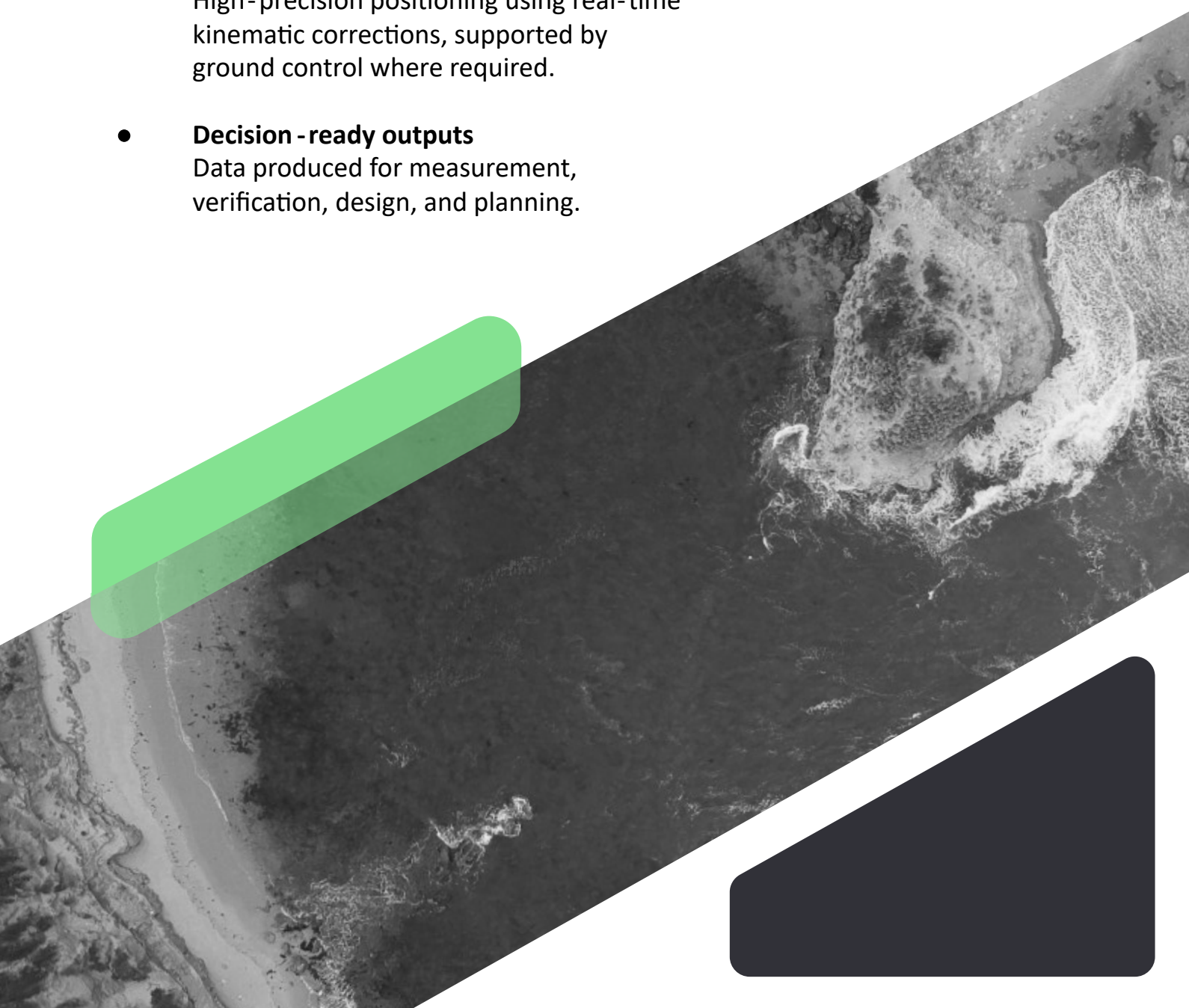
Contents

Our Principles	04
Message from the Director	05
Our Values	06
Data Accuracy	07
Deliverables	08
Project Outcomes	09
Who We Work With	10
Client Testimonials	11
Let's Work Together	12

Our Principles

Our principles ensure spatial data from our projects is accurate, repeatable, and defensible.

- **CASA -compliant RPAS operations**
Risk-assessed flights aligned with airspace and site conditions.
- **GNSS / RTK– supported data capture**
High-precision positioning using real-time kinematic corrections, supported by ground control where required.
- **Decision -ready outputs**
Data produced for measurement, verification, design, and planning.



Message from the Director



"I built this company with a passion for technology and the benefits it can bring to real-world people and projects. Many don't yet recognise the true value of data, and my goal is to make this technology more accessible, affordable, and effective for those who need it. With an engineering background and direct involvement in project delivery, MÒR MAPPING delivers accurate, reliable, and practical data solutions - helping you make more intelligent decisions."

Jonathan Smith
Director - MÒR MAPPING

Our Values:

CASIQ



CURIOSITY

We approach every environment with curiosity, uncovering patterns and new possibilities in every dataset.



ADAPTABILITY

We adapt our workflows to each site, task, and terrain to deliver practical outcomes



SAFETY

We operate with uncompromising safety, protecting people, property, and the environment.



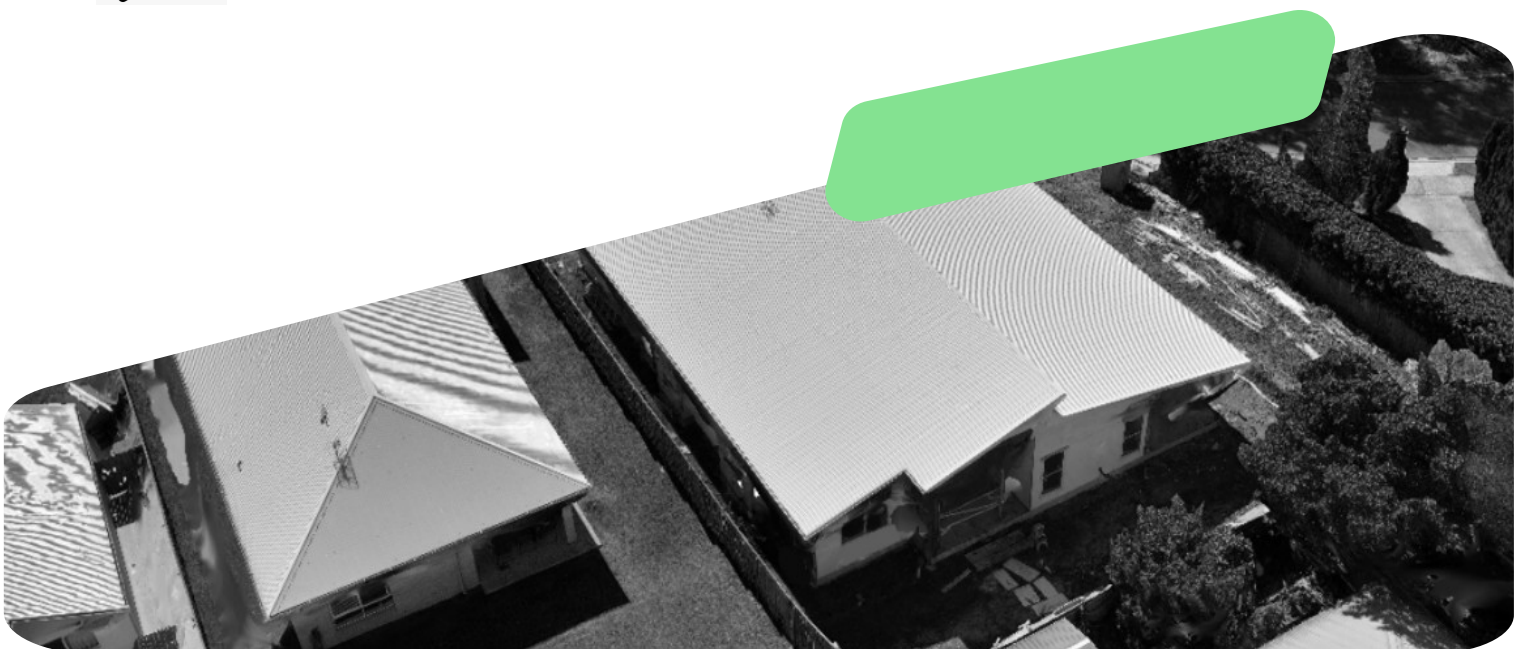
IMPACT

We create impact through data that delivers clarity, confidence, and progress.



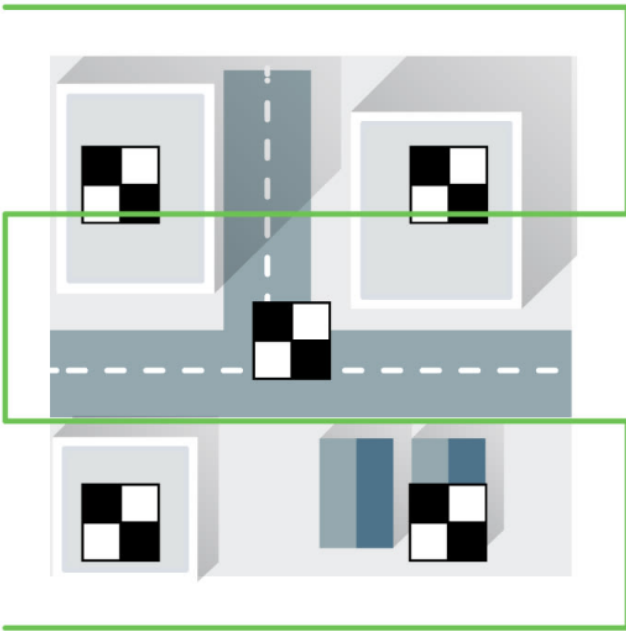
QUALITY

We uphold uncompromising quality, delivering accurate, dependable maps and models.

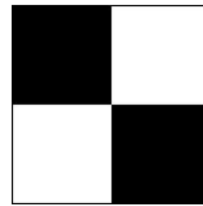


How We Ensure Accuracy

Accuracy is built into every stage of our workflow – from planning through to delivery – ensuring datasets are reliable, repeatable, and fit for purpose.



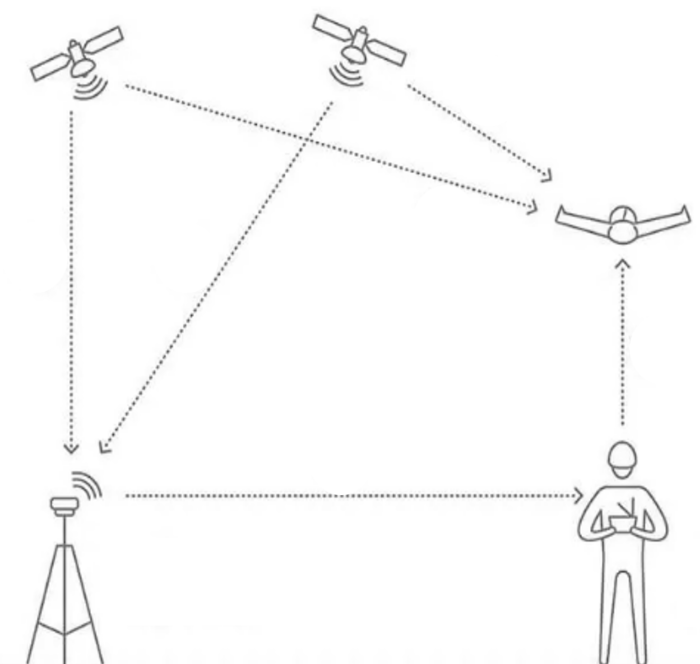
Typical GCP layout for positional validation



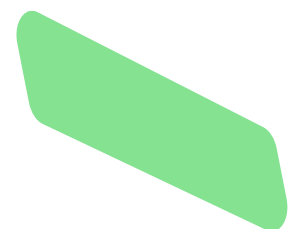
GCPs: Surveyed ground reference points used within RPAS workflows to verify and improve positional accuracy.

FRAMEWORK INCLUDES:

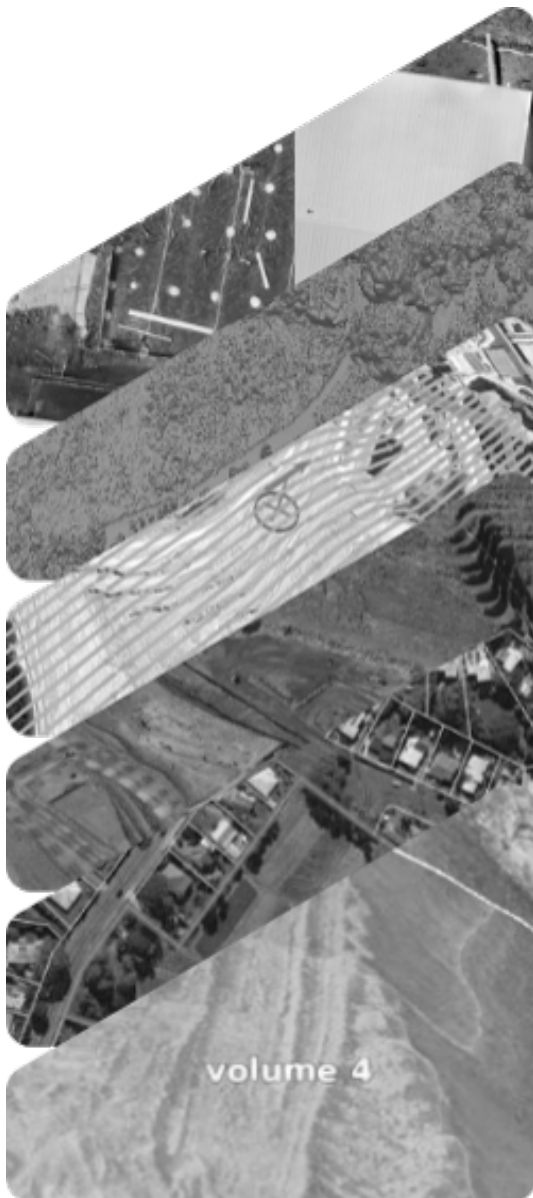
- *Planning and control*
- *Aerial data capture*
- *GNSS / RTK positioning*
- *Ground control Validation*
- *Processing and QA*
- *Data delivery*



GNSS RTK positioning system



What We Deliver



Orthomosaic imagery

High-resolution site imagery for planning, measurement, and visual verification.

Digital Surface Models (DSM)

Surface models including structures and vegetation for analysis and planning.

Digital Terrain Models (DTM)

Bare-earth terrain models for design, drainage, and earthworks assessment.

Point clouds

Dense 3D datasets supporting measurement, modelling, and spatial analysis.

Contours and surfaces

Derived elevation data for design, volumes, and construction workflows.

Volumetric reports

Calculated cut, fill, and stockpile volumes for verification and reporting.

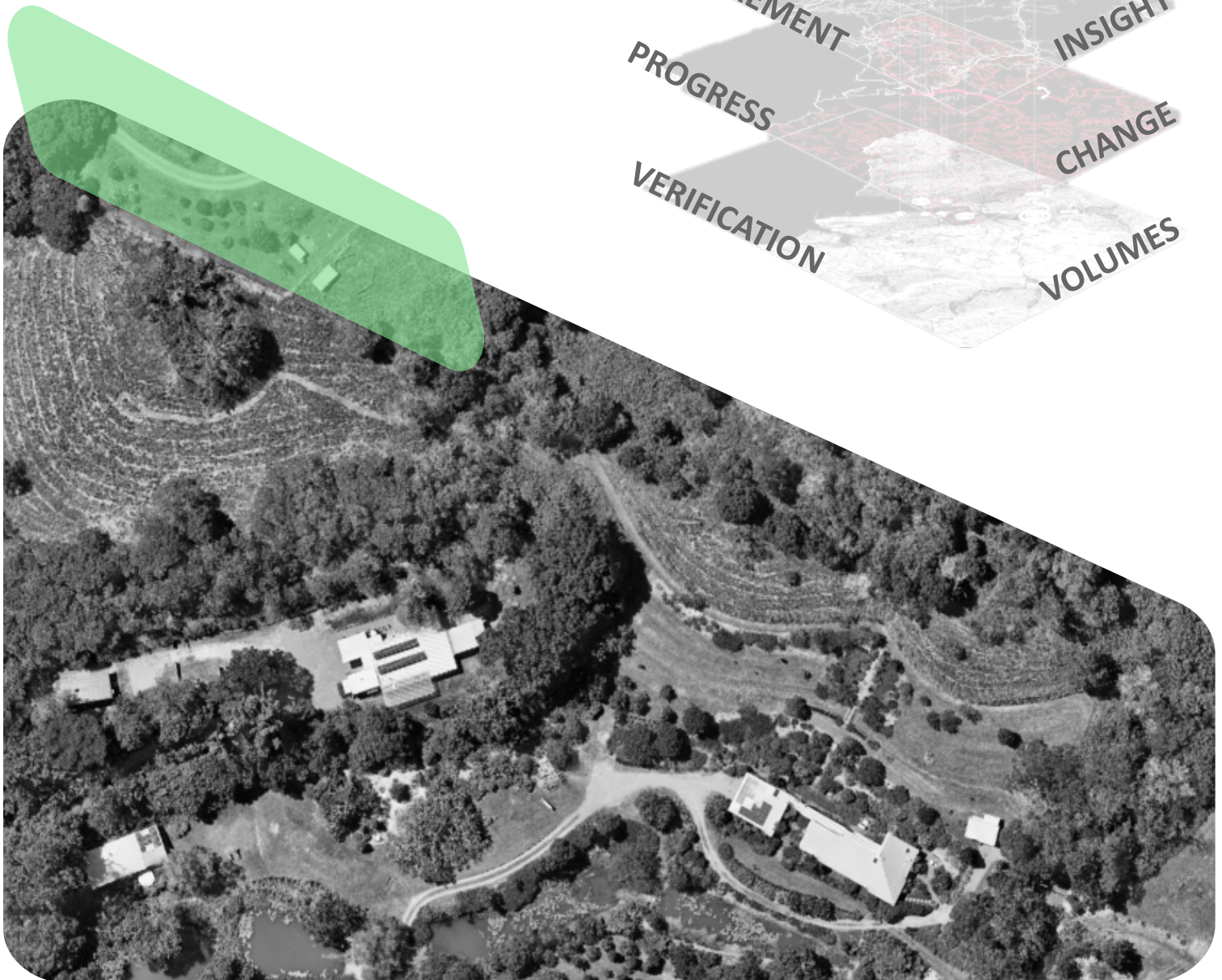
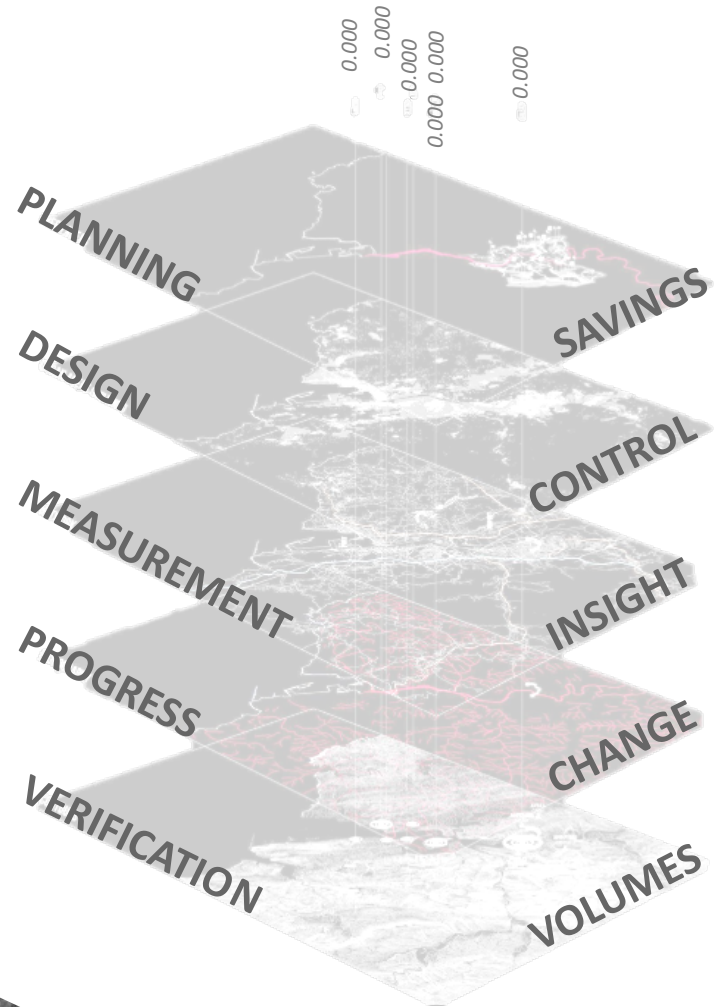
CAD / GIS -ready data sets

Spatial data formatted for direct integration into design and analysis software.



Supporting Real-World Outcomes

*Built for purpose.
Proven in the field.*



Who We Work With

SUPPORTING PROJECTS ACROSS KEY INDUSTRIES

CONSTRUCTION

Progress tracking, site verification, and volumetric analysis to support planning, compliance, and delivery.

MINING & QUARRY

Accurate stockpile volumes and terrain models to optimise extraction workflows and improve site safety.

AGRICULTURE & LAND

Yield monitoring, boundary mapping, and terrain insights to improve land management and productivity.

PRIVATE & BESPOKE

Custom mapping solutions tailored to unique sites, assets, and project requirements.



TESTIMONIALS

What Our Clients Say



“MÒR MAPPING mapped my 13 acres property over the span of 12 months, modelling the changes in vegetation, growth, waterflow, etc... The team even used council overlays to show precisely where the neighbouring boundaries were, which allowed us to consider subdivisions and optimising our land.”

Robin, homeowner to “The Prestigious House of the Year” at the 2025 Sunshine Coast Regional Architecture Awards



“Jonathan provided me with weekly snapshots and measurements at my Sunshine Coast residential development site so I could monitor progress of my build without the expense of sending my team to site. It has been an invaluable project management tool and saved me headaches in the long run. He could pinpoint exactly where measurements were off, by the centimetre. Very impressed and I’ll be using him for all my jobs.”

Carl, Construction Project Manager, Brisbane CBD

Let's Work TOGETHER

*Accurate data.
Better decisions.*

We deliver reliable aerial mapping and geospatial data to support better project outcomes.



ENQUIRIES

enquiries@mormapping.com.au

CALL

+61 (0) 404 303 400

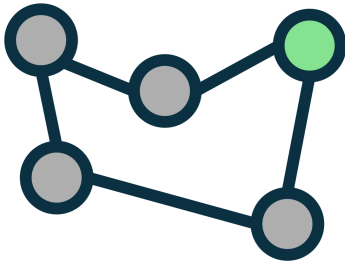
MOR MAPPING PTY LTD

690 126 160 | 77 690 126 160

MORMAPPING.COM.AU



Servicing Sunshine Coast & SE Queensland



MÒR
M a p p i n g



Contact Us

P : + 61 (0) 404 303 400

E : enquiries@mormapping.com.au

w : mormapping.com.au

